



iSmart Laundrette

Your Laundry Done Smarter

DRYING GUIDE

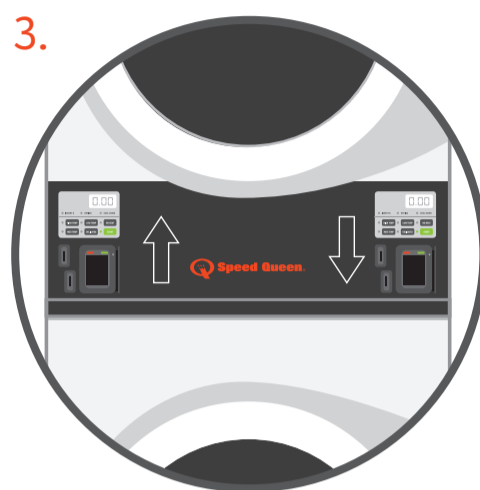
GET THE BEST DRY



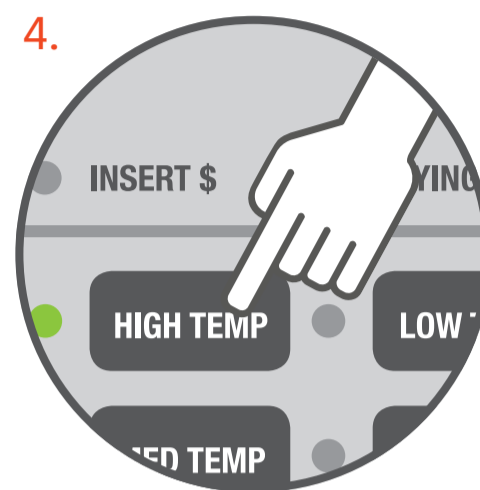
1. Before loading, check pockets for any loose items.



2. Load dryer and close the door.



3. For stacked models – ensure proper control is used.



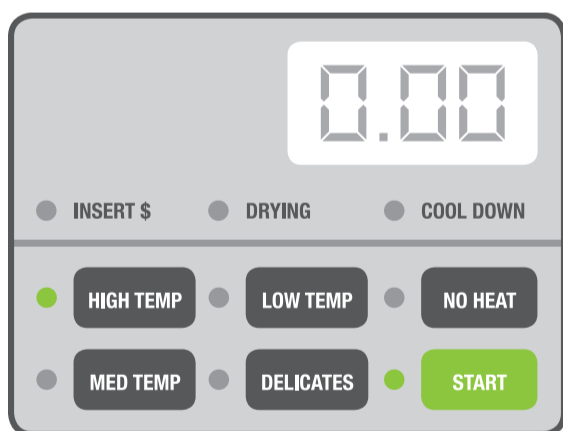
4. Select dry cycle. For what temperature to use, see below chart.

5.

Make a payment by tapping, swiping or inserting card. **OR** Insert coins. \$1 & \$2 Coins If fitted **OR** Pay with your Smart Phone APP! Loyalty Program Available

Simply download the Speed Queen app and follow the prompts.

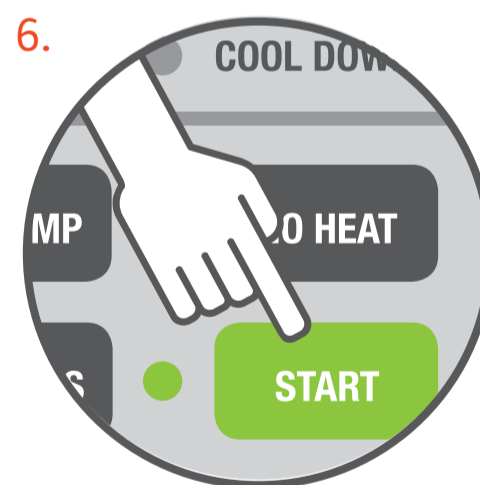
Wait for pay approval.



WHAT TEMPERATURE DO I USE?

HIGH TEMP	This is HOT! It is 88°C
MED TEMP	This is MEDIUM! It is 82°C
LOW TEMP	This is LOW! It is 72°C
DELICATES	This is VERY LOW! It is 54°C
NOT HEAT	This just uses room temperature air

Check the tags on your clothes to see what temp suits your clothes!



PRESS START



IMPORTANT SAFETY INSTRUCTIONS

- Ensure dryer is empty before loading.
- To reduce the risk of fire, DO NOT DRY plastics or articles containing foam, rubber or similarly textured rubberlike materials.
- Do not dry articles that have been cleaned in, washed or soaked in or spotted with gasoline, dry cleaning solvents, other flammable or explosive substances as they give off vapors that could ignite or explode.
- Do not use fabric softeners or products to eliminate static unless recommended by the manufacturer of the softener or product.
- Do not allow children on or in the tumbler! This appliance is not intended for use by young children or infirm persons without supervision. Young children should be supervised to ensure that they do not play with the appliance.
- Do not reach in to the tumbler if the cylinder is revolving.